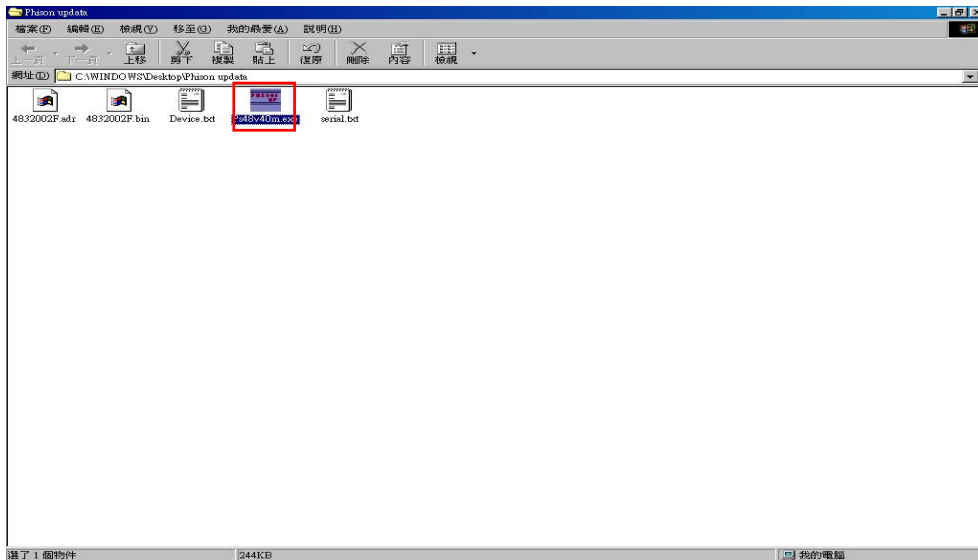


The operation step of upgrading card reader firmware:

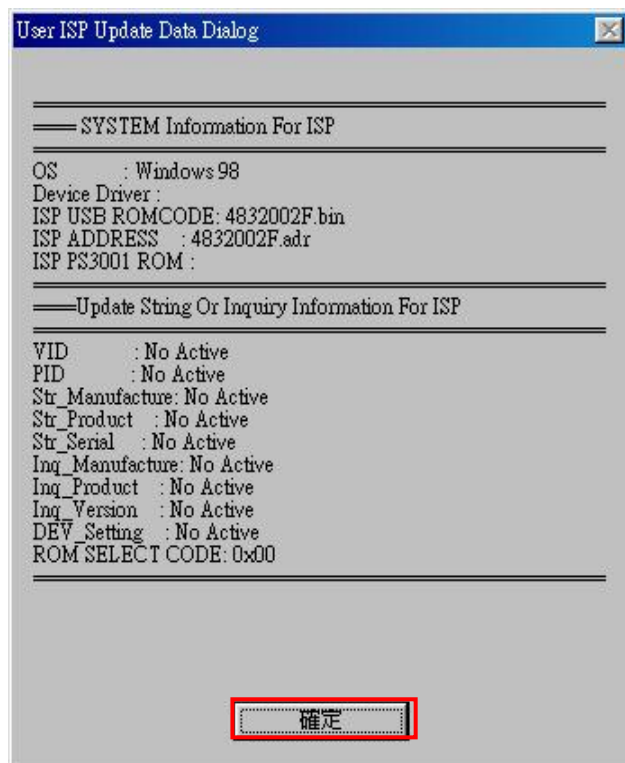
Please download the compressed file from web site then extract this file firstly.

1. Connect Photo-storage machine (F2C1 or F2C2 or F2B) with Computer.
2. Click “Ps48v40m.exe” to run this upgrading program (Picture 1) .



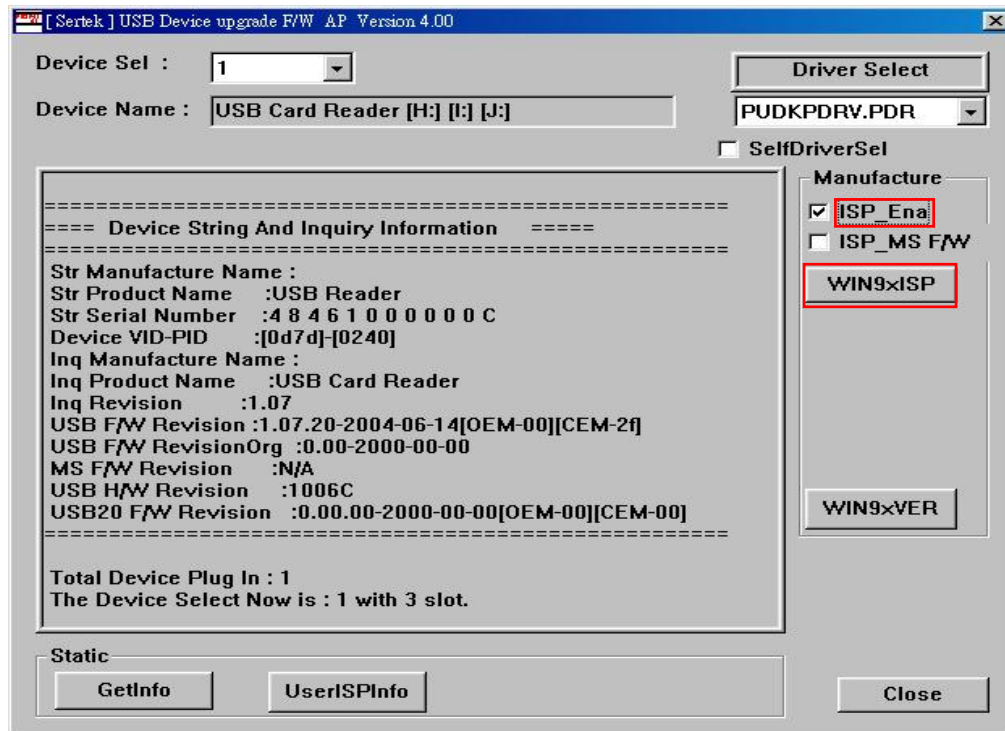
(Picture 1)

3. Click “確定” to continue this program. (Picture 2)



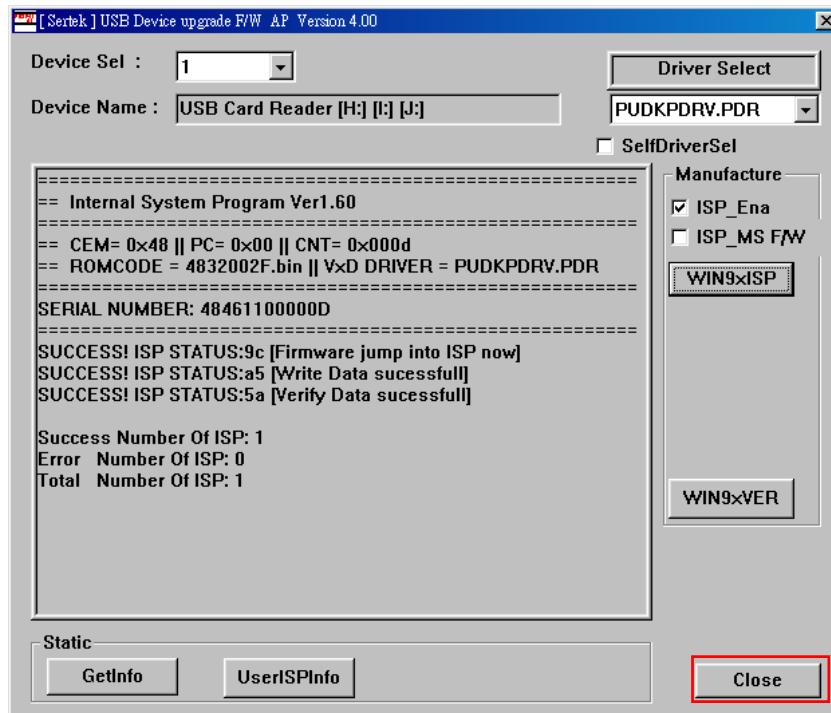
(Picture 2)

4. The program will be into “Upgrade Block” (Picture 3) , choice “ISP_Ena” item , then click “WIN9XISP” to start firmware upgrading process ◦



(Picture 3)

5. After finish upgrading process, there will have a information block and click “Close” to close this program (Picture 4) ◦



(Picture 4)